

# N-Si (Nitrogen-Silicon)

H. Okamoto

The Si-N phase diagram in [Massalski2] was adopted from [1990Car]. This was a partial diagram on the Si-rich side covering only 0-0.015 at.% N (solid lines in Fig. 1).

[2003Ma] proposed a complete Si-N phase diagram based on thermodynamic assessment (Fig. 2). The Si-rich side is enlarged in Fig. 1 with dashed lines.

## References

- 1990Car:** O.N. Carlson, The N-Si (Nitrogen-Silicon) System, *Bull. Alloy Phase Diagrams*, Vol 11 (No. 6), 1990, p 569-573  
**2003Ma:** X. Ma, C. Li, F. Wang, and W. Zhang, Thermodynamic Assessment of the Si-N System, *Computer Coupling Phase Diagrams Thermochem.*, Vol 27, 2003, p 383-388

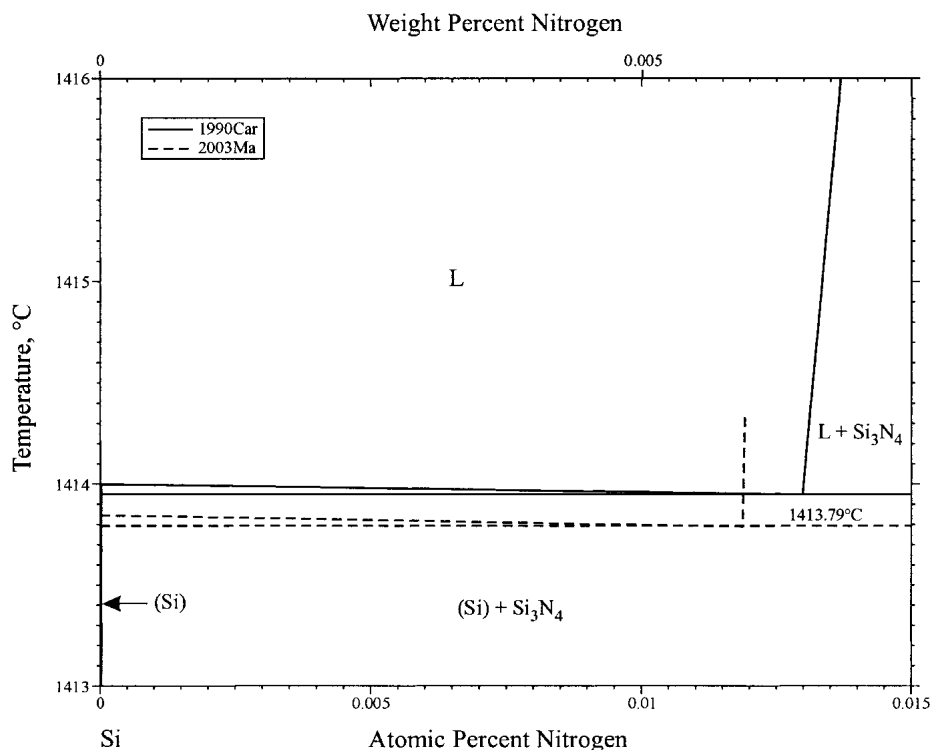


Fig. 1 Si-rich corner of the Si-N phase diagram assessed by [1990Car] and [2003Ma]

### Section III: Supplemental Literature Review

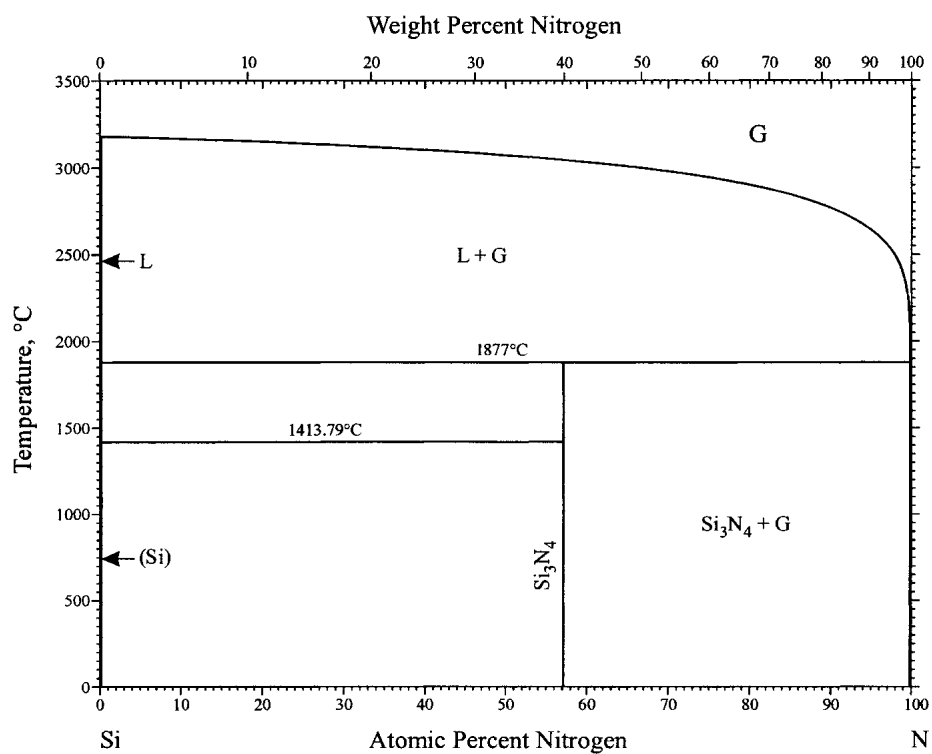


Fig. 2 Calculated Si-N phase diagram [2003Ma]